

Guadalupe County

Community Health Profile

Introduction

This profile describes the current health status of the county. With this information, the community can complete an assessment and begin to address specific issues and set goals for health improvement

The data in this report is drawn from standard sources most of which are available from the NM Indicator Based Information System (IBIS) for Public Health operated by the New Mexico Department of Health. Data from the US Census, state birth and death files, Youth Risk and Resiliency Survey, as well as official population estimates are available on this site.

This report provides selected indicators for each county and comparison to the state as a whole. Here we provide only basic indicators. When a county chooses to address an issue or problem, residents and health councils can work with the regional DOH epidemiologists and health promotion team to gather additional data. For example, if a county decides to take on deaths due to motor vehicle crashes, they will want to find out more about the location of crashes, types of vehicles, and involvement of alcohol.

Trends: For many of the indicators, trends are presented. The DOH has been using the Results Based Accountability and Turning the Curve methods for planning and priority setting which are based on trends.

Small Numbers: The population density of many New Mexico counties is quite low. This means that in a single year the number of deaths is small and often quite variable from year to year. The trends in this report (except for counties with large populations) are shown as averages of three years: 2001-2003, 2004-2006, 2007-2009, 2010-2012. Even then, sparsely populated counties will not have enough births or deaths to report or see a trend. For example, Hidalgo county reported only one infant death from 2006-12. Even when events are more common, there may not be enough to break rates down by age, sex, or race/ethnicity.

Rates: Most data included here are shown as rates and/or counts. A count is simply how many events occurred in a given time. A rate is the number of events in the time period divided by the population at risk for the event multiplied by a number like 100, 1000, or 100,000. Rates can be when the multiplier is 100, we have a percentage. For example, a measure of poverty might be the number of households in a county whose income is below the federal poverty line divided by then total number of households multiplied by 100 (392 households in poverty/1824 households =392/1824 * 100 =21.5%).

Rare events, such as deaths for a particular (rare) cause, require multiplying by a larger number to get a whole number. If there were 9 cases of cancer in a population of 4834, $9/4834=.0018622$. But when we multiply that by 100,000 we get 186.2 per 100,000 people, an easier number to imagine. Death rates are conventionally reported per 100,000 people in the population, but you will see that Female Breast Cancer is reported per 100,000 women. Births are more common, so they are reported per 1000 people; a fertility rate is even more specific the number of live births per 1000 women of child bearing ages.

Finally, when we compare county death rates, there is an additional issue. The population of a county with a younger population will have a different set of causes of death than an older population. We expect there to be more heart attacks and falls in a county with a large proportion of the population over 60 and more bicycle crashes where the population is under 20. In order to make the counties comparable, we calculate the rates as if they occurred in a standard population. You do not have to know how this is done, just that when you see “Age Adjusted Rates” it means that the rate has been calculated to allow valid comparison across different populations. One more detail: if we compare specific age groups in different counties, no adjustment is required because we are looking at the same age-defined segment of the population in each county.

Purpose of this Profile

This profile is provided to assist county councils and other organizations as well as citizens and policy makers to assess the health of their county population. This information is presented as simply as possible so that people who are not health professionals can see a difference between their community and the state as a whole and begin the process of planning for better health.

Organization of this report

Basic demographic and economic information is provided in *Quick Facts*. Population by age and sex is shown as a table and population pyramid graphic. The NM Dept. of Health commissioned an analysis of the undercount of Hispanics and minorities by UNM Bureau of Business and Economic Research (BBER). The result was a new set of population estimates that have been integrated with the IBIS databases.

Health is related in complex ways to education, so we report on graduation rates in *Education* by gender, race/ethnicity and economic disadvantage. Where a county is served by more than one district, graduation rates are given for each district. Graduation data are from the NM Public Education Department web site.

Risk and Resiliency are measures that either predispose a population to poor health or protect them and promote good health. These measures come from two surveys: the Behavioral Risk Factor Surveillance Survey (BRFSS) managed by the Department of Health and the Youth Risk and Resiliency carried out in schools and managed by the UNM Prevention Research Center.

Chronic Disease The leading causes of death from chronic diseases are shown as trends and where population is sufficient by race/ethnicity. Trends for chronic disease are three year averages beginning in 2001 and ending in 2012. In counties with a low population even combining three years often does not produce stable rates.

Injury Deaths due to leading types of injuries, motor vehicle, suicide, falls and all injuries are shown Deaths due to poisoning are shown. The main component of poisoning is drug overdose deaths.

Births Total births, births by mother's age and ethnicity are included here. Infant mortality is also shown in this section.

A final section summarizes health resources available in the county.

Population

The population of Guadalupe County in 2013 was estimated at 4,551. The population has decreased 2.9 percent since the 2010 census.

The 5.1% of the population is less than 5 years old, 17.3% is over 65 years old.

79.8% percent of the population is of Hispanic origin.

3.2% of the population is foreign-born.

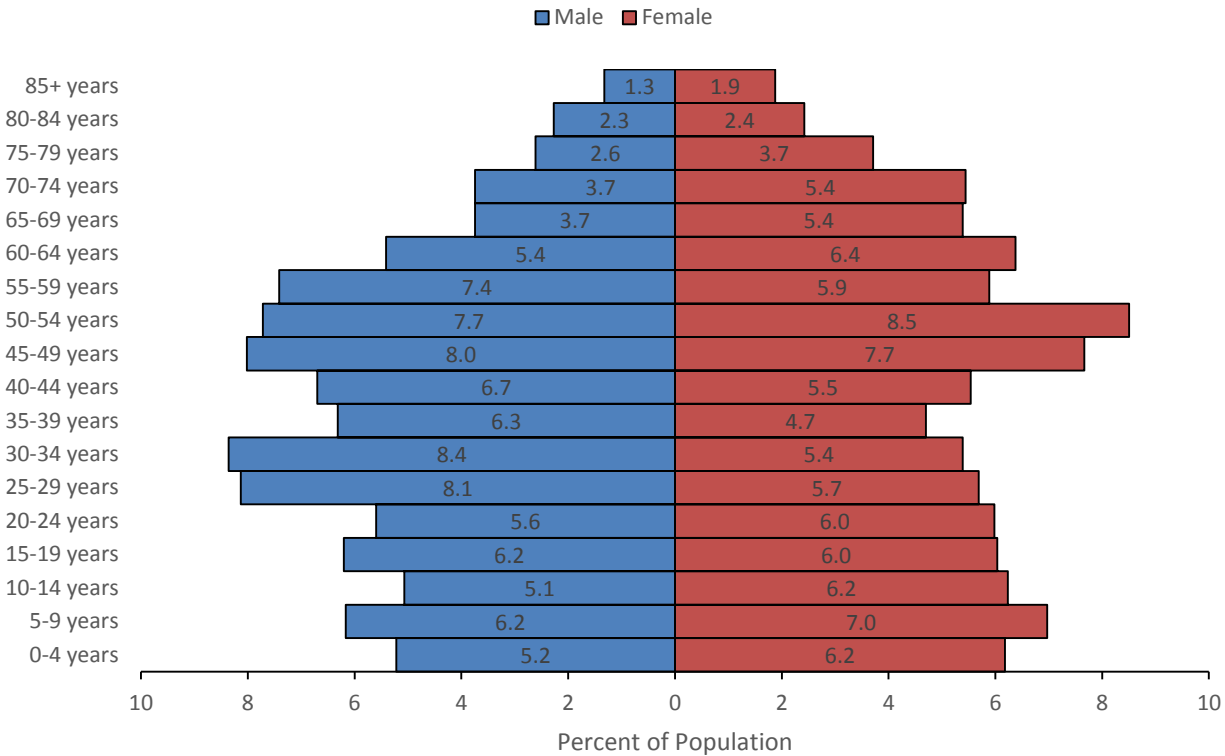
These data are from the Census Quick Facts,
<http://quickfacts.census.gov/qfd/states/35/35019.html>

Guadalupe County Population by Age and
Sex, 2012

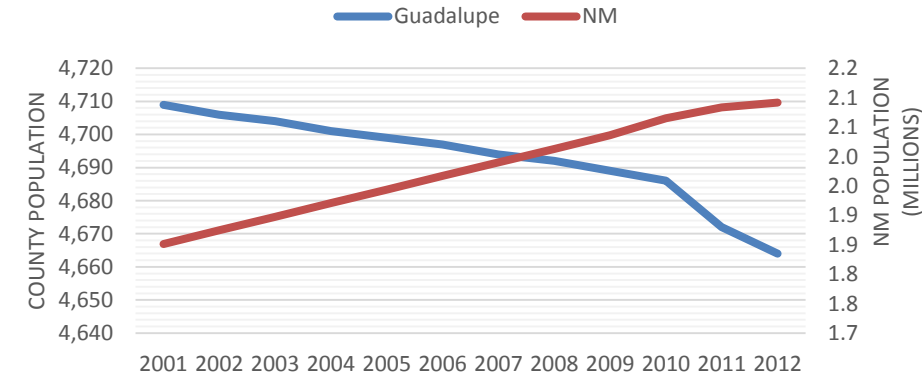
Age	Male		Female	
	Count	Percent	Count	Percent
Total	2643		2022	
0-4 years	138	5.2	125	6.2
5-9 years	163	6.2	141	7.0
10-14 years	134	5.1	126	6.2
15-19 years	164	6.2	122	6.0
20-24 years	148	5.6	121	6.0
25-29 years	215	8.1	115	5.7
30-34 years	221	8.4	109	5.4
35-39 years	167	6.3	95	4.7
40-44 years	177	6.7	112	5.5
45-49 years	212	8.0	155	7.7
50-54 years	204	7.7	172	8.5
55-59 years	196	7.4	119	5.9
60-64 years	143	5.4	129	6.4
65-69 years	99	3.7	109	5.4
70-74 years	99	3.7	110	5.4
75-79 years	69	2.6	75	3.7
80-84 years	60	2.3	49	2.4
85+ years	35	1.3	38	1.9

Source <https://ibis.health.state.nm.us/query/result/pop/PopMain/Count.html>

Age and Sex Population Pyramid, Guadalupe County, 2012

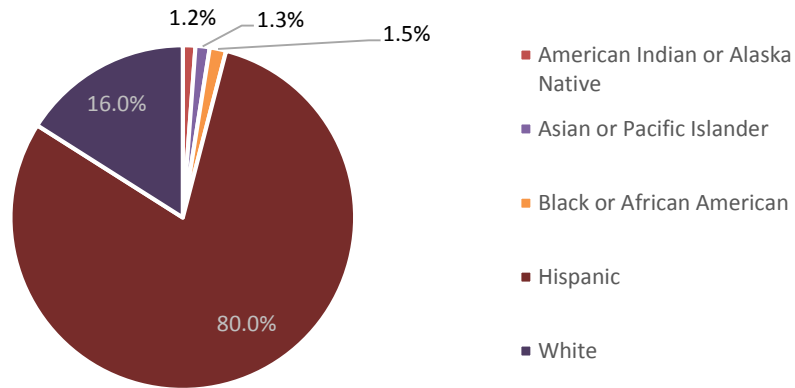


Estimated Population Trends, 2000-2012



Source: <https://ibis.health.state.nm.us/query/result/pop/PopMain/Count.html>

Guadalupe County Population, by Race/Ethnicity, 2012



Race/Ethnicity	Guadalupe	Percent	NM	Percent
Total	4664	100.0%	2091432	100.0%
American Indian or Alaska Native	55	1.2%	183169	8.8%
Asian or Pacific Islander	62	1.3%	31101	1.5%
Black or African American	72	1.5%	42825	2.0%
Hispanic	3729	80.0%	969417	46.4%
White	747	16.0%	864919	41.4%

Approximately 712 people live in group quarters. These include jails, prisons, nursing homes, and dormitories. The Guadalupe County Correctional Facility has a capacity of 600.

Single Parent Households

Single Parent Households, Guadalupe County 2008-12

Total Households	1,374	
Single Male Householder	114	8.3%
Single Female Householder	202	14.7%
Number of grandparents responsible for children under 18 years old	55	

Housing

In 2012, there were 2,391 housing units in Guadalupe County; 8.4% were multi-unit structures; 81.1% of housing units were owner-occupied. The median value of an owner-occupied home in 2008-12 was \$88,800. There are an average of 2.87 persons per household.

Households paying excessive (>30% income) in rent/house payments)

Families that pay more than about one third of their income for housing may be limiting expenditures on other budget items such as food or medicine. Those paying excessive rent may also be at risk for losing their home. A high percentage of people paying excessive rent may also indicate lack of affordable housing. Two measures from the Census address this: Selected Monthly Owner Costs as Percentage of Household Income (SMOCAPI) and Gross Rent as a Percentage of Household Income (GRAPI).

In Guadalupe County, 38.5% of owners with a mortgage paid 30% or more of their income for housing while 48.9% of renters had excessive housing costs.

Source American Community Survey, 2008-12. Table ACS_12_5Yr_DP04

Homelessness

According to the 2013 NM Point in Time Survey, In Guadalupe County there were no people found experiencing homelessness.

Source NM Coalition to End Homelessness. 2013. Point in Time Count Results.

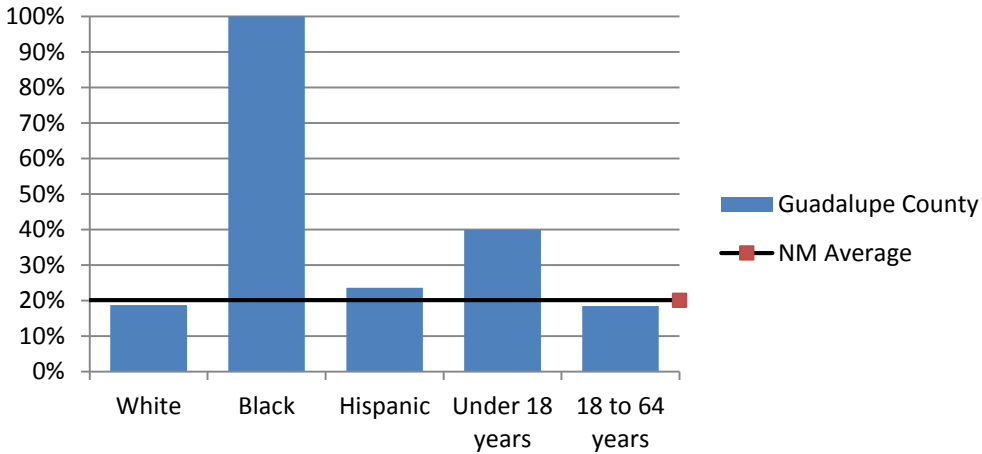
<http://nmceh.org/pages/homelessnessReports.html>

Income and Poverty

Average per capita money income (2008-12) was \$14,189 and median household income was \$27,242. According to the Census Bureau in 2012, about a quarter of the population lived below the poverty line. The unemployment rate (2012) was 9.8%. This is the proportion of the work force that is unemployed and looking for work. The Federal Poverty Level varies by family size; for a family of four the rate was \$23,050 in 2012.

Sources: Income—These data are from the Census Quick Facts, <http://quickfacts.census.gov/qfd/states/35/35019.html> Unemployment: <http://www.bls.gov/lau/data.htm>

Percent below Poverty Level by Ethnicity and Special Categories, Guadalupe County

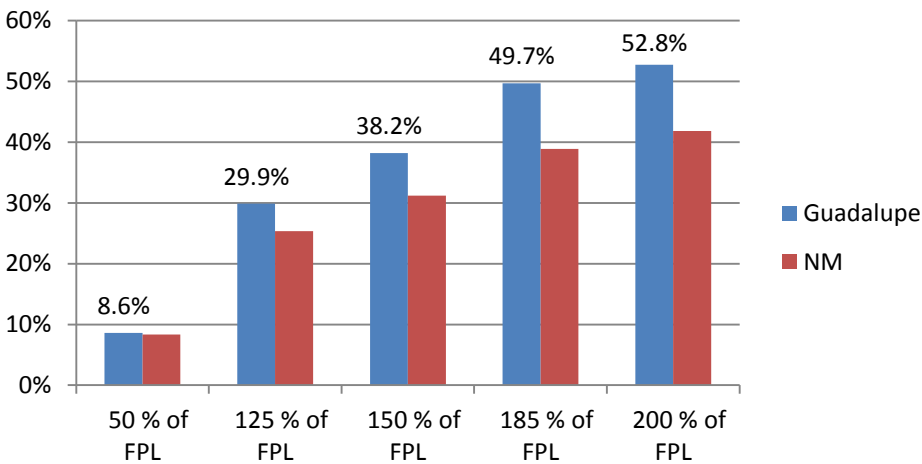


Source: 2008-12 American Community Survey, 5 year Estimates table S1701.

See the following site for information on federal poverty level:

<http://aspe.hhs.gov/poverty/12poverty.shtml>

Percent Below Poverty Levels



Education and Language

Education and Language	Guadalupe	New Mexico
Language other than English spoken at home	54.4%	36%
High School Graduate or Higher	81.9%	83.4%
Bachelor's degree or higher	9.2%	25.6%

These data are from the Census Quick Facts,
<http://quickfacts.census.gov/qfd/states/35/35019.html>

Guadalupe County School Enrollment

SCHOOL ENROLLMENT	Estimate	Percent
Population 3 years and over enrolled in school	1,182	
Nursery school, preschool	42	3.6%
Kindergarten	29	2.5%
Elementary school (grades 1-8)	552	46.7%
High school (grades 9-12)	298	25.2%
College or graduate school	261	22.1%

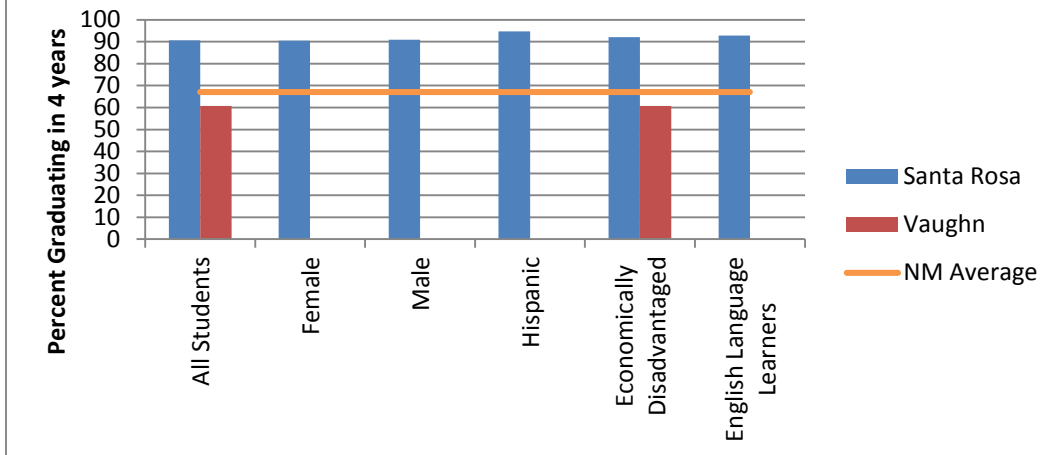
Guadalupe County Educational Attainment

EDUCATIONAL ATTAINMENT		
Population 25 years and over	3,131	100%
Less than 9th grade	222	7.1%
9th to 12th grade, no diploma	344	11.0%
High school graduate (includes equivalency)	1,312	41.9%
Some college, no degree	686	21.9%
Associate's degree	278	8.9%
Bachelor's degree	181	5.8%
Graduate or professional degree	108	3.4%

Source: American Community Survey, 2008-12, Selected Social Indicators, DP02, 5 year estimate

Four Year Graduation Rate, by District, San Juan 2013 By District

Graduation Rate, by District, Guadalupe County, 2013 graduation cohort



Category	Santa Rosa	Vaughn
All Students	90.7	60.7
Female	90.5	
Male	90.9	
Hispanic	94.7	
Economically Disadvantaged	92.1	60.7
English Language Learners	92.8	

NM Public Education Department <http://ped.state.nm.us/Graduation/index.html>

Child Abuse

Child Abuse Investigations, July 2012-June 2013

County	Accepted Reports	% Substantiated	Number of substantiated child victims	Child Victim Rate per 1000 children
Guadalupe	44	50%	15	13.4
NM	18197	25%	7788	13.4

Source: 360 Yearly State Fiscal Year 2013, NM Children Youth and Families Department.

http://cyfd.org/docs/360ANNUAL_FY13_1210.pdf

Risk and Resiliency

Risk and Resiliency is measured by a two surveys, the Behavior Risk Factor Surveillance Survey conducted by the NM Department of Health and the Youth Risk and Resiliency Survey conducted by school districts. The YRRS measures are self-reported by the student.

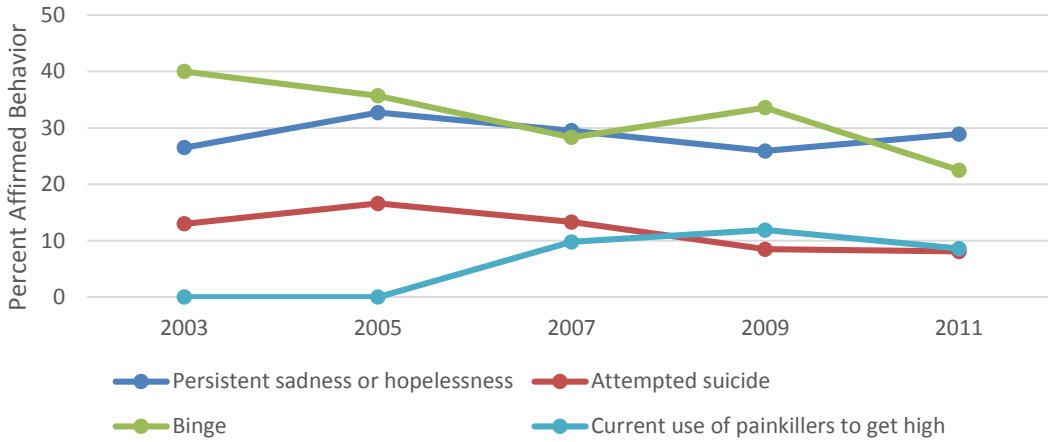
Adolescent Indicators

Measure	Guadalupe	NM
Adolescent Risk and Resiliency Measures		
Ate Five or More Servings of Fruit or Vegetables per Day 2009,2010,2011	23.3%	23.8%
Adolescent Obesity, self-reported BMI above 95th percentile for age and sex	20.6%	12.4%
Youth Smoking Prevalence, percentage of students who smoked cigarettes on or more days in the past month	21.1%	22.7%
Youth with Feeling of Sadness or Hopelessness	28.1%	30.8%
Youth with Trusted Adult in Community	63.1 %	48.0%
Binge Drinking	28.1%	24.9%

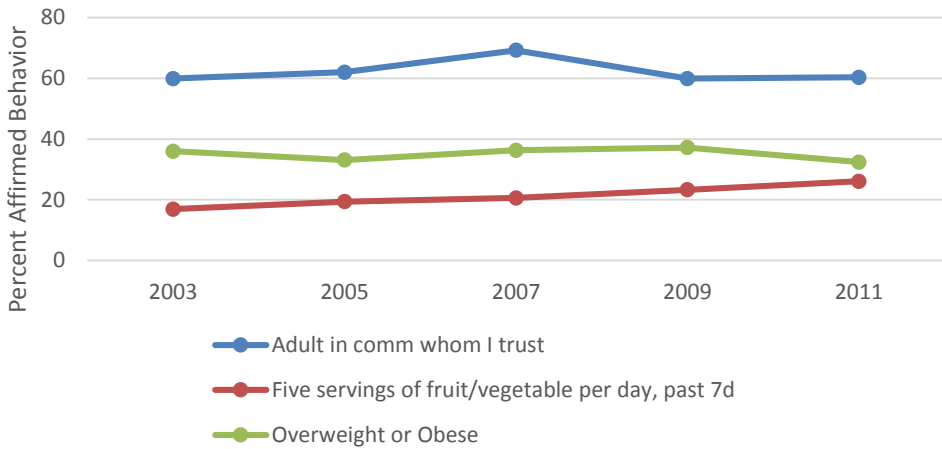
Youth Risk and Resiliency Survey (YRRS) 2007, 2009, 2011 surveys grades 9-12

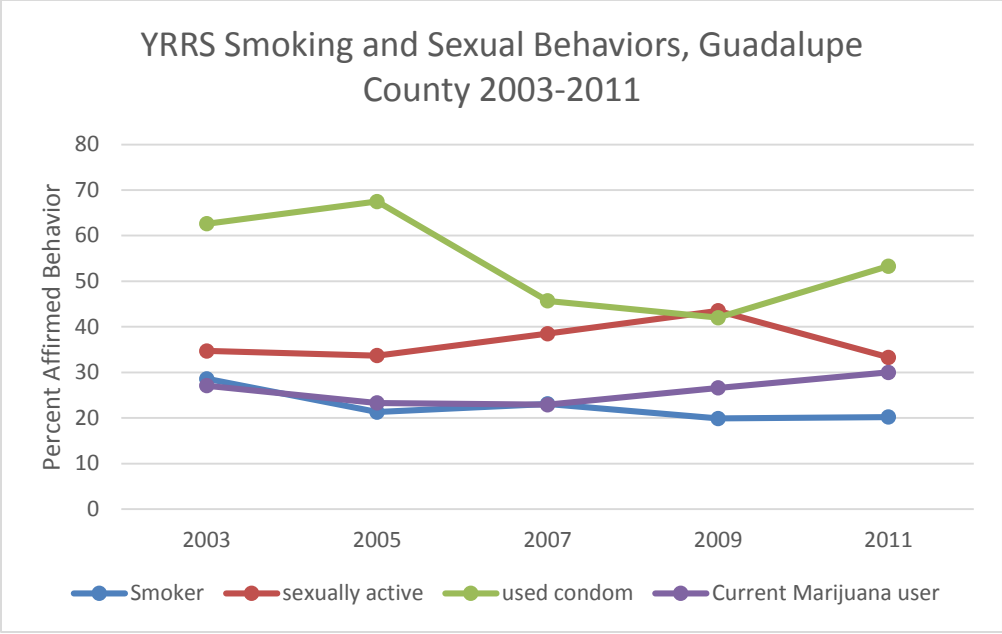
<https://ibis.health.state.nm.us/query/selection/yrrs/YRRSSelection.html>

YRRS Behavioral Health Indicators, Guadalupe County, Trend 2003-2011



YRRS Trust, Food, Obesity Indicators, Guadalupe County, 2003-2011





Guadalupe County	2003	2005	2007	2009	2011	Average
Persistent sadness or hopelessness	26.5	32.7	29.5	25.9	28.9	28.1
Attempted suicide	13	16.6	13.3	8.5	8.1	10.0
Binge Drinking	40	35.7	28.3	33.6	22.5	28.1
Current Marijuana user	27.1	23.3	22.9	26.6	30	26.5
Current use of painkillers to get high			9.8	11.9	8.6	10.1
Ever used illegal injection drugs	1	3.7	1.7	0.6	4.7	2.3
Smoker	28.6	21.3	23.1	19.9	20.2	21.1
Sexually active	34.7	33.7	38.5	43.5	33.3	38.4
Used condom	62.6	67.5	45.7	42	53.3	47.0
Adult in comm whom I trust	59.9	62	69.2	59.9	60.3	63.1
Five servings of fruit/vegetable per day, past 7d	16.9	19.4	20.6	23.3	26.1	23.3
Overweight or Obese	36	33.1	36.3	37.2	32.4	35.3
Obese	14.2	18.5	19.2	25.6	17	20.6

Adult Risk Indicators

Obesity and Smoking constitute risk factors for many chronic diseases and early death.

Physical Activity and a diet with many fruits and vegetables are protective. These data are self-reported via the Behavioral Risk Factor Surveillance System (BRFSS).

Measure	Guadalupe Co	NM
General Self-Reported Health Status, percentage of adults reporting fair or poor health	17%	17.5%
Adult Physical Activity, 2005, 2007, 2009	48.3%	52.5%
Adults Consuming 5 or more servings of fruits and vegetable per day, 2007, 2009	9%	22.4%
Obesity Among Adults bmi >25, 2011, 2012	*	62.7%
Adult Smoking Prevalence current smoker, 2011, 2012	32.6%	21.0%

*This rate is unstable because of small sample size

Smoking varies by race, ethnicity and other demographic factors. Smoking prevalence tends to be higher among the poor, mentally ill, and LGBT populations. For example in NM, among households with income less than \$15,000, 34% smoke; with income of \$50,000 or more, the rate is 12%, almost a threefold difference. In 2011, 48% of adults who characterized themselves as bisexual smoked.

Mortality

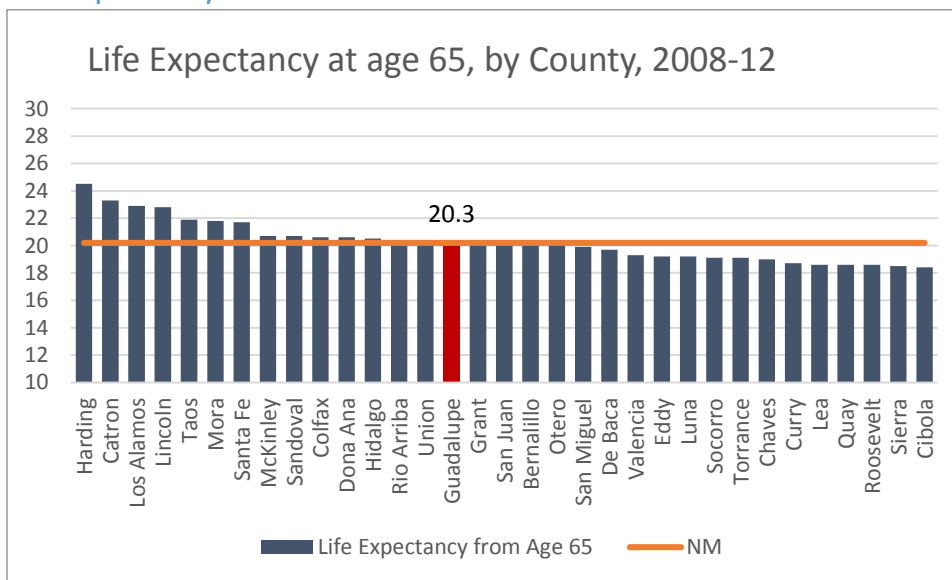
Leading Causes of Death

Age adjusted rates per 100,000 people

Causes	Guadalupe	NM
Total	627.2	616.3
Circulatory, Heart disease (ICD10: I00-I09, I11, I13, I20-I51)	163.8	150
Neoplasm, malignant (ICD10: C00-C97)	147.1	147.9
Injury, Unintentional injuries (ICD10: V01-X59, Y85-Y86)	57.6	62.4
Circulatory, Cerebrovascular diseases (ICD10: I60-I69)	54.6	34.2
Respiratory, Chronic lower respiratory diseases (ICD10: J40-J47)	45	45.9
Diabetes mellitus (ICD10: E10-E14)	37	27.8
Nephritis, Nephrotic syndrome and Nephrosis (ICD10: N00-N07, N17-N19, N25-N27)	22.8	12.8
Injury, Intentional self-harm (suicide) (ICD10: X60-X84, Y87.0, *U03)	21.2	19.9
Circulatory, Essential (primary) hypertension and hypertensive renal disease (ICD10: I10, I12)	19.7	5.9
Chronic liver disease and cirrhosis (ICD10: K70, K73-K74)	16.8	18.1

Green Indicates the county rate is better, lower, than the New Mexico rate.

Life Expectancy

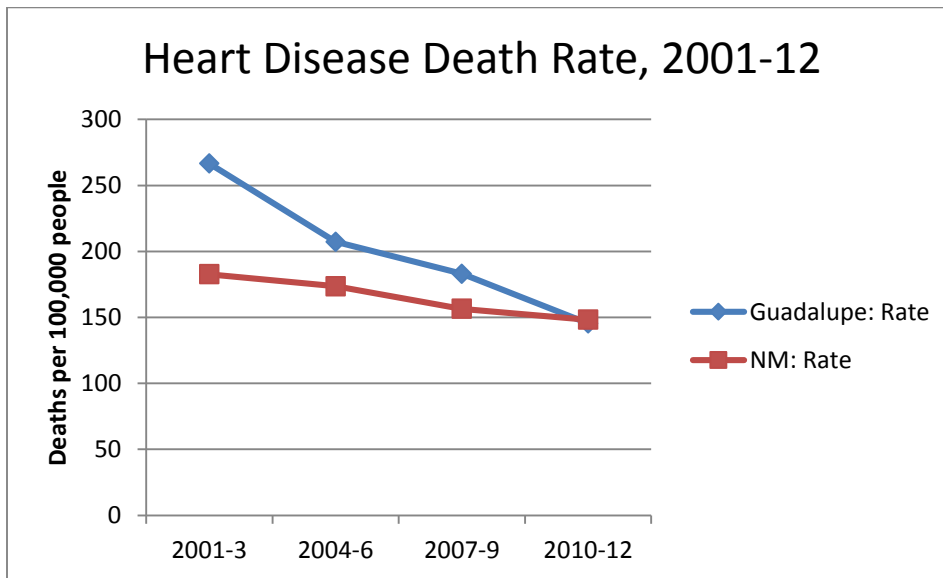


The number of years a person is expected to live after age 65 varies from 24.5 to 18.4

Chronic Diseases

Chronic diseases are conditions that develop slowly, often inconspicuously, and even with treatment affect a person throughout his or her lifetime. Chronic diseases are often the result of lifestyle choices (such as smoking), exposure to environmental pollution or toxins, and genetics (some cancers). Increasingly, overeating and resulting obesity have been cited as causes of many chronic diseases, including diabetes, heart disease, stroke, and some cancers. Chronic diseases do not have a single cause. The effects of multiple factors are often cumulative, that is, they combine over time to increase a person’s risk.

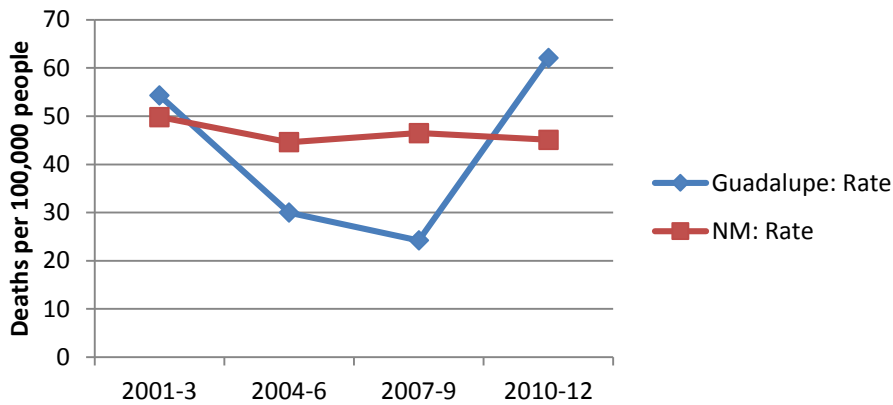
The death rates shown below are adjusted to make the county and state populations comparable (in terms of ages). The rates are the number of deaths per 100,000 thousand people susceptible to the disease.



Heart Disease

	2001-3	2004-6	2007-9	2010-12
Guadalupe: Rate	266.5	207.3	183	145.5
Guadalupe: Deaths	42	34	30	24
NM: Rate	182.7	173.6	156.5	148.2

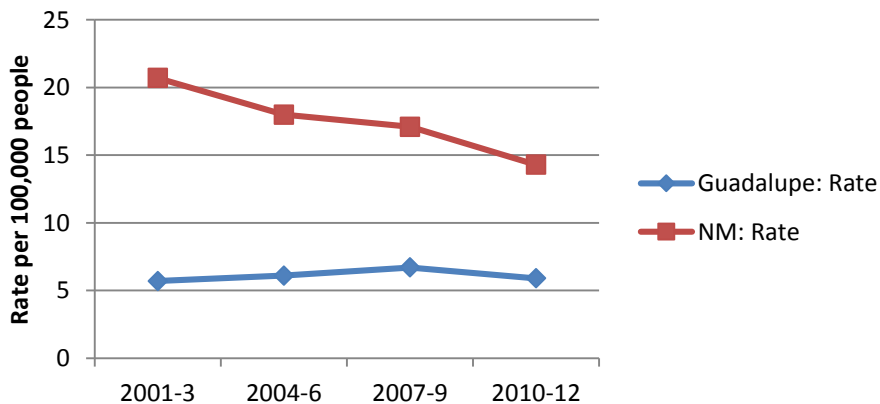
Lower Respiratory (COPD), Death Rate 2001-12



Lower Respiratory (COPD)

	2001-3	2004-6	2007-9	2010-12
Guadalupe: Rate	54.3	30	24.2	62.1
Guadalupe: Deaths	8	5	4	11
NM: Rate	49.8	44.6	46.5	45.1

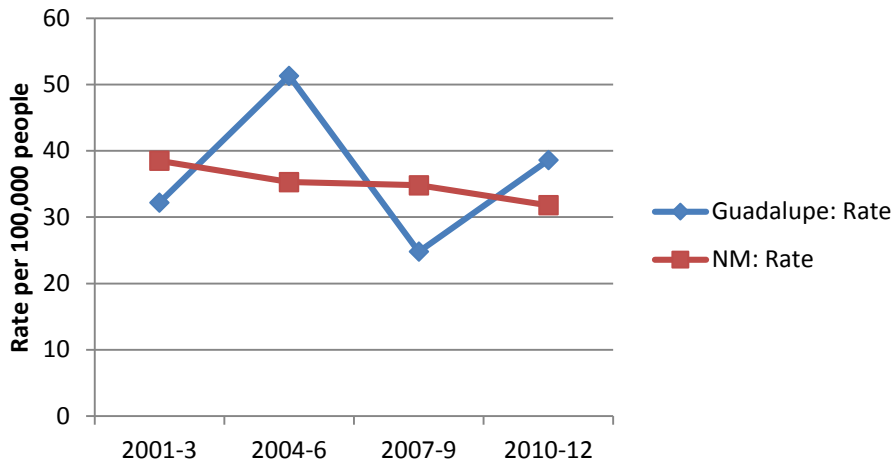
Influenza and Pneumonia Death Rate, 2001-12



Influenza-Pneumonia

	2001-3	2004-6	2007-9	2010-12
Guadalupe: Rate	5.7	6.1	6.7	5.9
Guadalupe: Deaths	1	1	1	1
NM: Rate	20.7	18	17.1	14.3

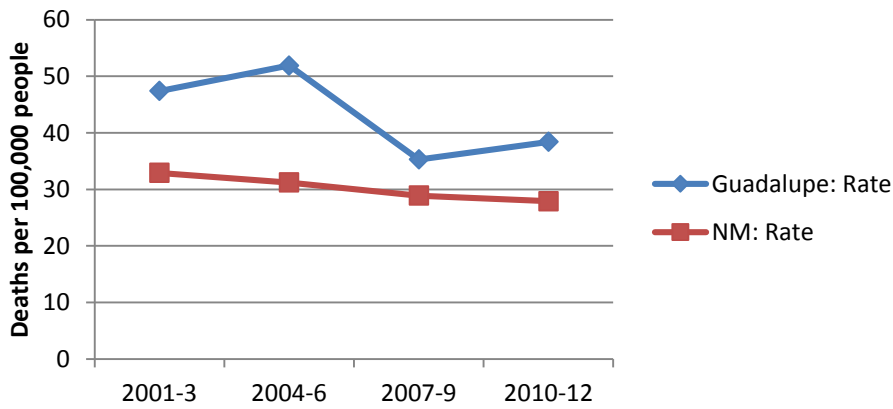
Lung Cancer Death Rate, 2001-12



Lung Cancer

	2001-3	2004-6	2007-9	2010-12
Guadalupe: Rate	32.2	51.3	24.8	38.6
Guadalupe: Deaths	5	8	4	7
NM: Rate	38.5	35.3	34.8	31.8

Diabetes Mellitus Death Rate, 2001-12



Diabetes Mellitus

	2001-3	2004-6	2007-9	2010-12
Guadalupe: Rate	47.4	51.9	35.3	38.4
Guadalupe: Deaths	8	8	6	7
NM: Rate	32.9	31.2	28.9	27.9

Cerebrovascular Disease Death Rate 2001-12

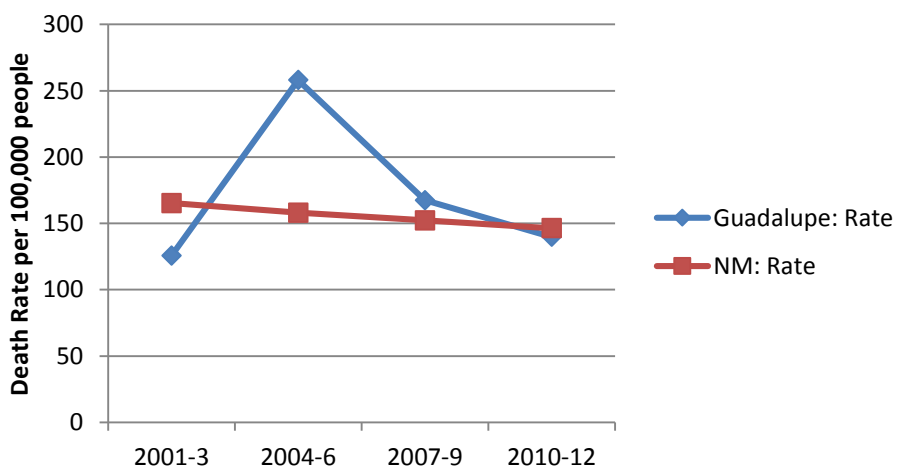


Cerebrovascular Diseases

	2001-3	2004-6	2007-9	2010-12
Guadalupe: Rate	37.3	24.1	73.4	36.7
Guadalupe: Deaths	6	4	12	6
NM: Rate	42.8	33.3	34.5	33.5

Cerebrovascular disease is commonly called “stroke”. This is one of many diseases whose risk rises with smoking.

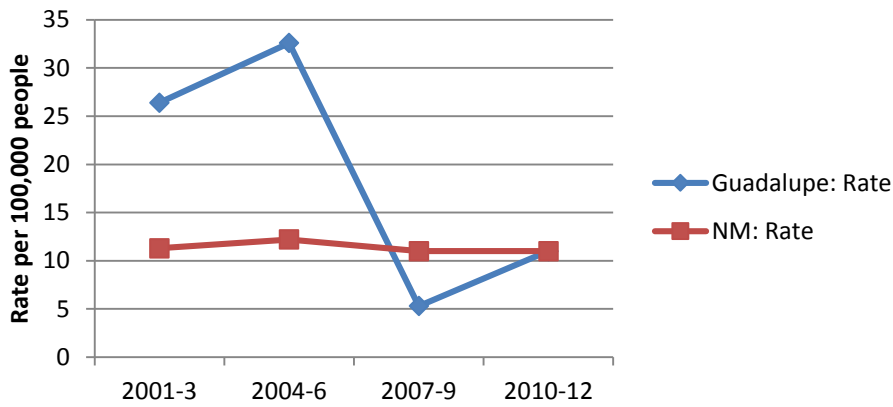
Cancer (all sites) Death Rate 2001-12



Cancer All Sites

	2001-3	2004-6	2007-9	2010-12
Guadalupe: Rate	125.6	258.1	167.4	139.8
Guadalupe: Deaths	19	41	27	25
NM: Rate	165.3	158.1	152.2	146.3

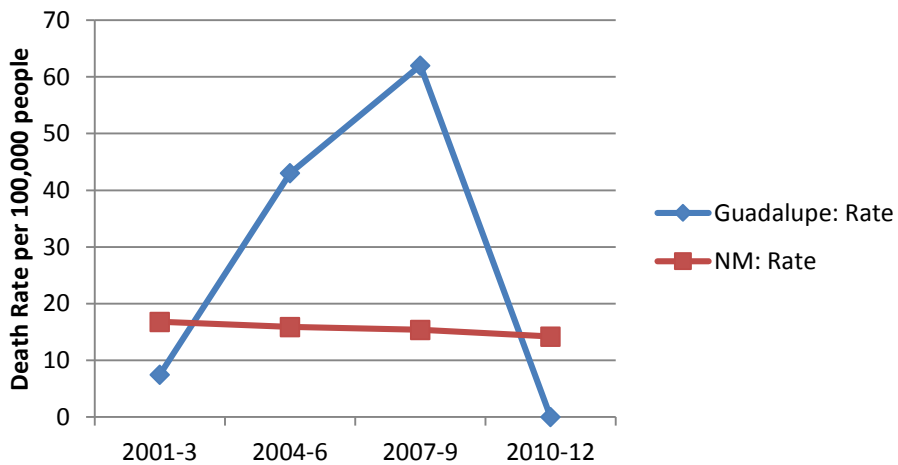
Breast Cancer Death Rate, 2001-12



Breast Cancer

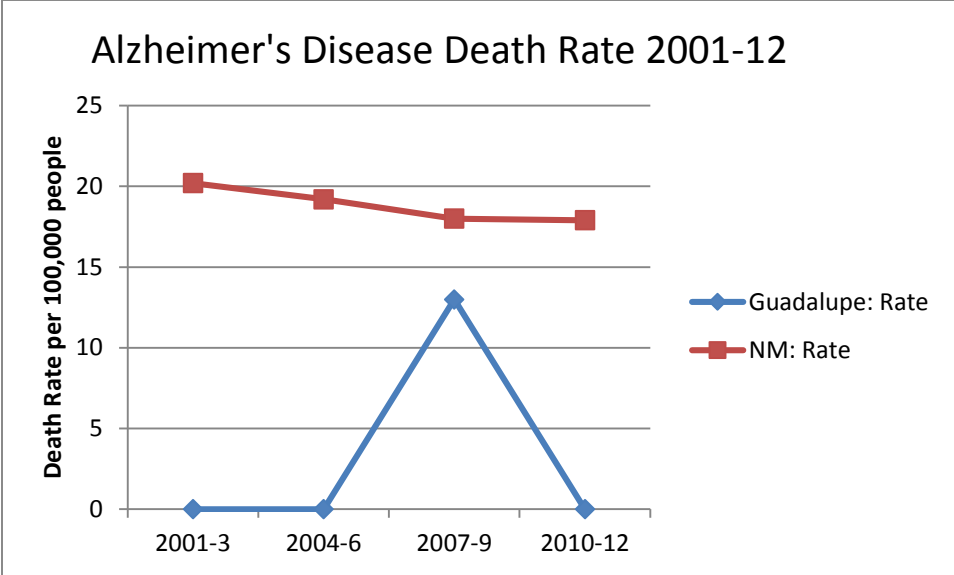
	2001-3	2004-6	2007-9	2010-12
Guadalupe: Rate	26.4	32.6	5.3	11
Guadalupe: Deaths	4	5	1	2
NM: Rate	11.3	12.2	11	11

Colon Cancer Death Rate 2001-12



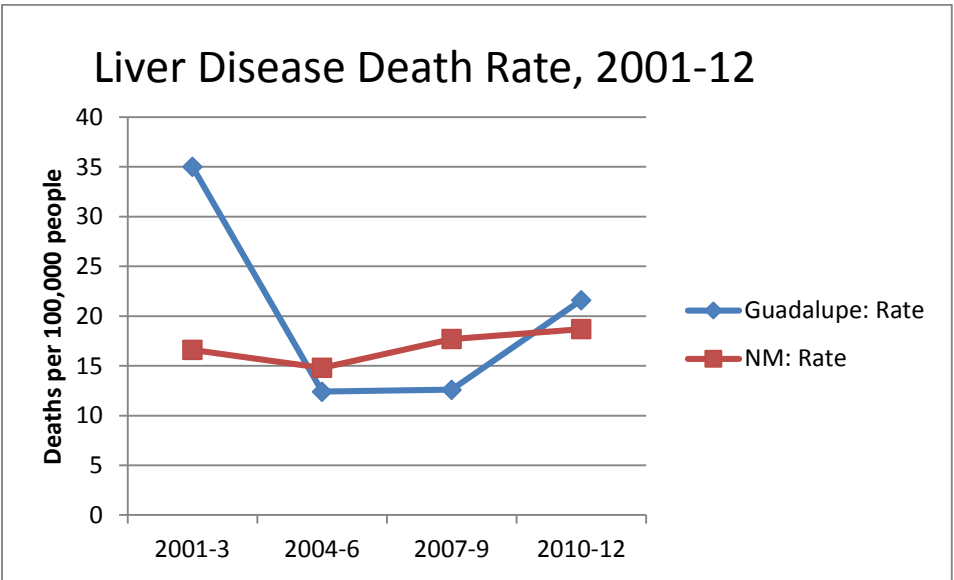
Neoplasm Colon

	2001-3	2004-6	2007-9	2010-12
Guadalupe: Rate	7.5	43	62	0
Guadalupe: Deaths	1	7	10	0
NM: Rate	16.8	15.9	15.4	14.2



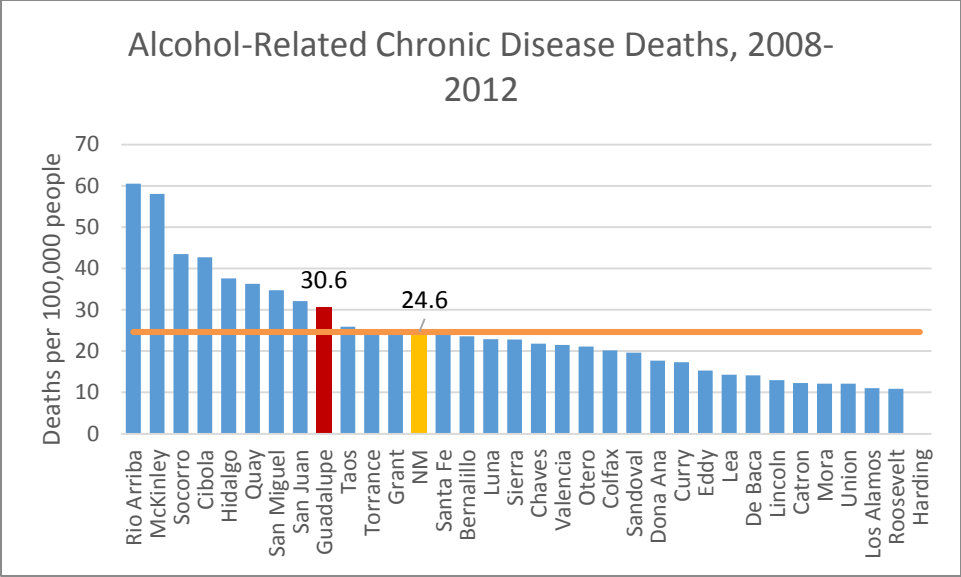
Alzheimer's Disease

	2001-3	2004-6	2007-9	2010-12
Guadalupe: Rate	0	0	13	0
Guadalupe: Deaths	0	0	2	0
NM: Rate	20.2	19.2	18	17.9



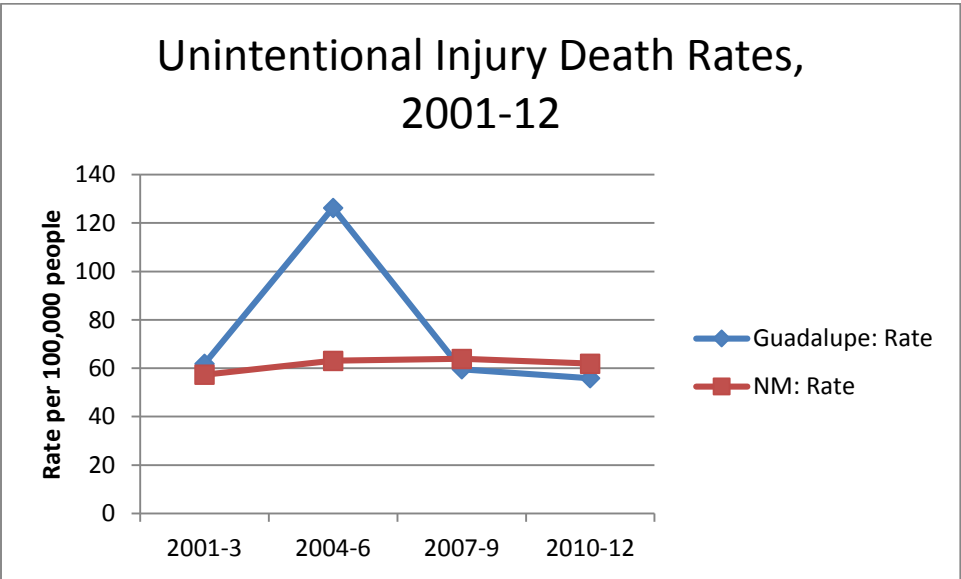
Liver Disease

	2001-3	2004-6	2007-9	2010-12
Guadalupe: Rate	35	12.4	12.6	21.6
Guadalupe: Deaths	5	2	2	4
NM: Rate	16.6	14.8	17.7	18.7



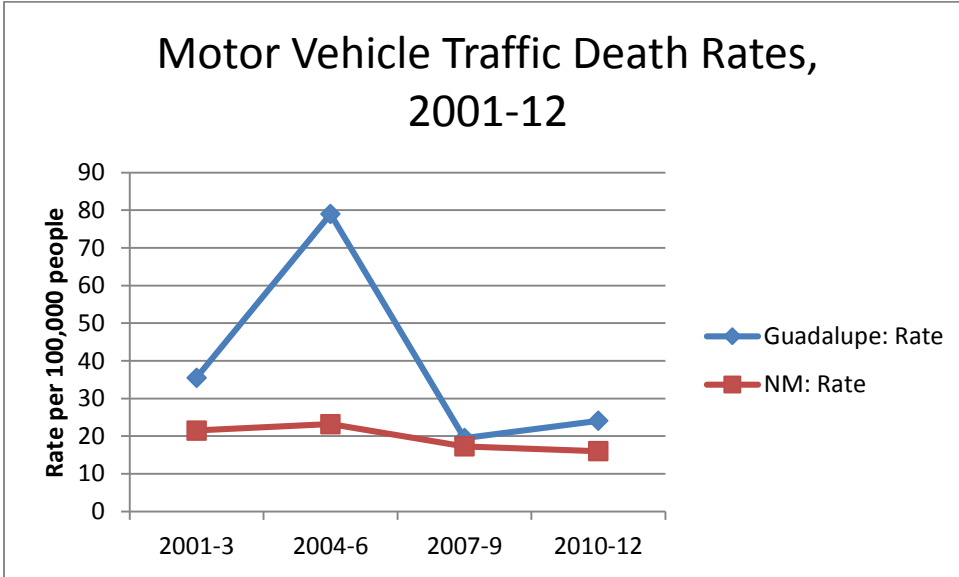
This chart includes chronic conditions directly and 100% attributable to consumption of alcohol. Included in this definition from the CDC’s Alcohol-Related Disease Impact (ARDI) program (http://apps.nccd.cdc.gov/DACH_ARDI/Info/ICDCodes.aspx): (alcohol) psychosis, abuse, dependence syndrome, myopathy, cardiomyopathy; alcoholic gastritis and liver disease; fetal alcohol syndrome, fetus and newborn affected by maternal use of alcohol, and alcoholic induced chronic pancreatitis. Conditions in which alcohol contributes, either directly or indirectly, to mortality are not included in this measure.

Unintentional Injuries



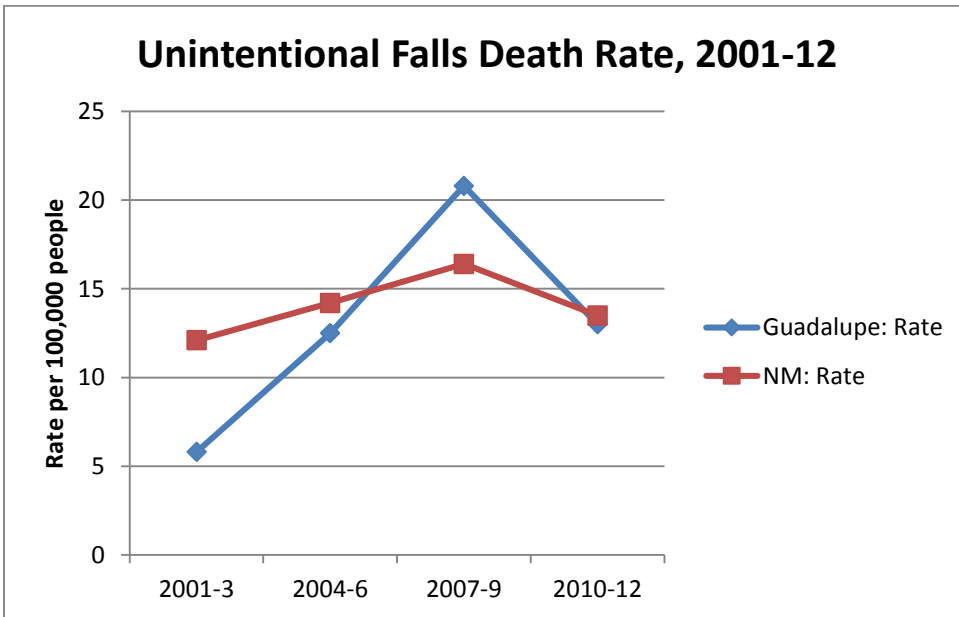
Unintentional Injury

	2001-3	2004-6	2007-9	2010-12
Guadalupe: Rate	61.8	126.3	59.6	55.9
Guadalupe: Deaths	9	18	9	8
NM: Rate	57.3	63.1	63.9	61.9



Motor Vehicle Traffic Death Rates

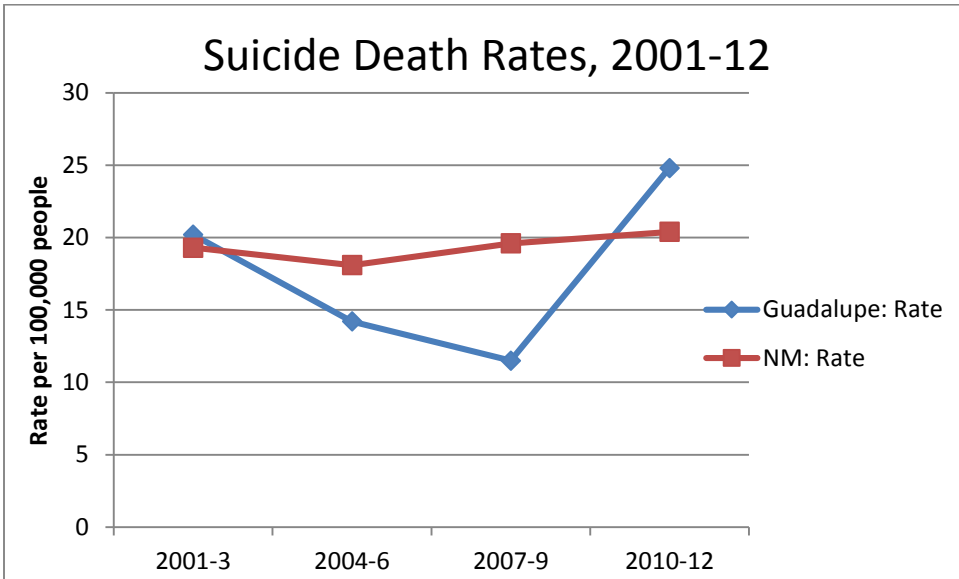
	2001-3	2004-6	2007-9	2010-12
Guadalupe: Rate	35.5	79	19.5	24.1
Guadalupe: Deaths	5	11	3	3
NM: Rate	21.5	23.2	17.3	16



Unintentional Fall Death Rates

	2001-3	2004-6	2007-9	2010-12
Guadalupe: Rate	5.8	12.5	20.8	13
Guadalupe: Deaths	1	2	3	2
NM: Rate	12.1	14.2	16.4	13.5

Deaths from falls include primarily elderly people. The average age at death from falls is about 72 years.

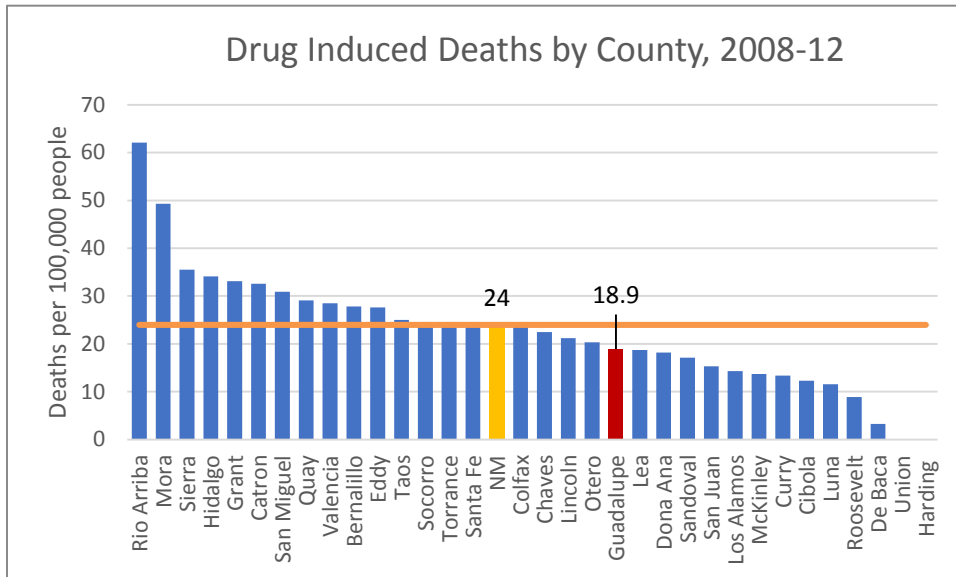


Suicide Death Rates

	2001-3	2004-6	2007-9	2010-12
Guadalupe: Rate	20.2	14.2	11.5	24.8
Guadalupe: Deaths	3	2	2	3
NM: Rate	19.3	18.1	19.6	20.4

Deaths Due to Drug Overdose

In 2008-12 there were 2,401 deaths due to drug overdose in NM, 5 in Guadalupe County



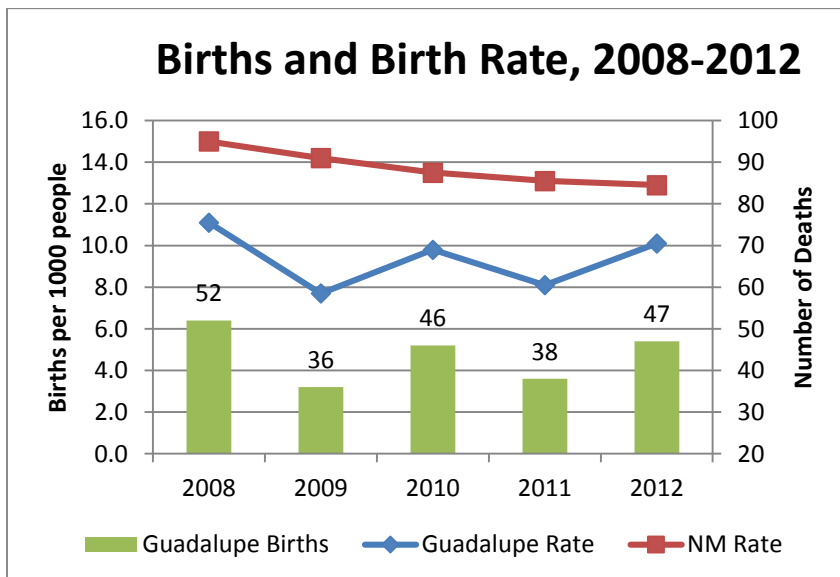
The Guadalupe County drug-induced death rate is below the state average

. See https://ibis.health.state.nm.us/indicator/complete_profile/DrugIndDth.html

The main codes for drug overdose are X40-X44, X60-64, X85.

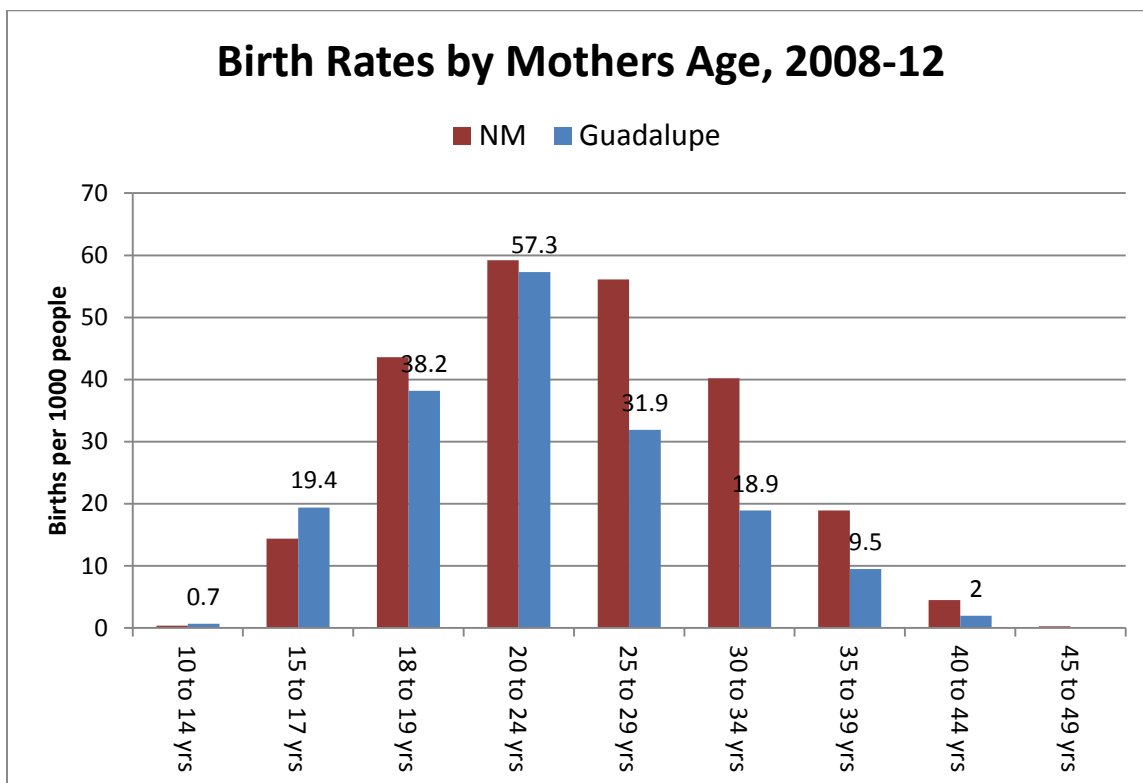
Births

Number of Births 2008-12

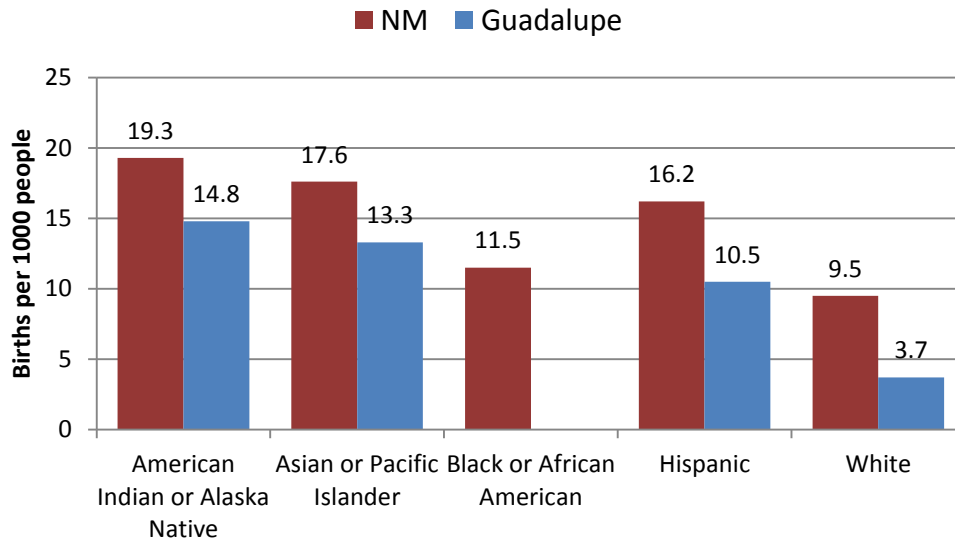


Number and Percentage of Births by Mother's Age

2008-2012	Guadalupe			NM		
	Births	Population	Rate	Births	Population	Rate
10 to 14	1	1335	0.7	255	711,772	0.4
15 to 17	17	877	19.4	6,468	449,182	14.4
18 to 19	22	577	38.2	13,055	299,422	43.6
20 to 24	79	1379	57.3	41,787	705,404	59.2
25 to 29	53	1664	31.9	38,894	693,507	56.1
30 to 34	31	1637	18.9	25,707	639,176	40.2
35 to 39	13	1369	9.5	11,816	624,147	18.9
40 to 44	3	1471	2	2,845	629,765	4.5
45 to 49				188	715,236	0.3
50+				22	3384155	0
Total Births	219			141,037		
Percent to 15-19 yr olds	17.8%	Rate	26.82	13.8%	Rate	26.08

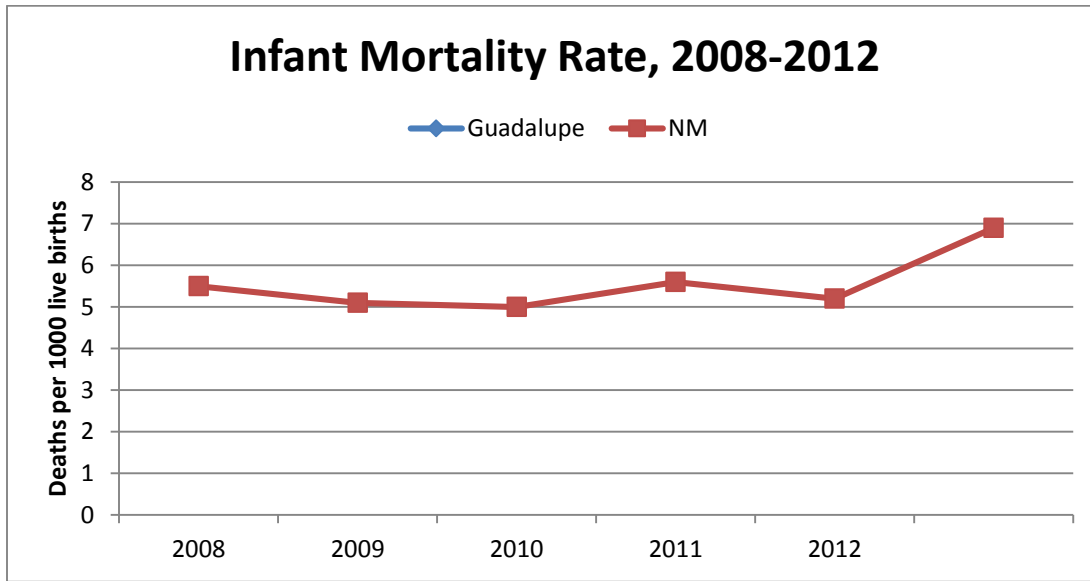


Birth Rates by Mothers Race/Ethnicity 2008-12



2008-12	Guadalupe				NM		
	Births	Population	Birth Rate	Pop. Avg.	Births	Population	Birth Rate
American Indian or Alaska Native	4	270	14.8	54	17517	906013	19.3
Asian or Pacific Islander	4	301	13.3	60.2	2656	151115	17.6
Black or African American				0	2405	209489	11.5
Hispanic	197	18724	10.5	3744.8	77018	4755227	16.2
White	14	3754	3.7	750.8	40634	4267697	9.5
Total	219	23404	9.4	4680.8	141060	10289540	13.7

Infant Mortality Rate

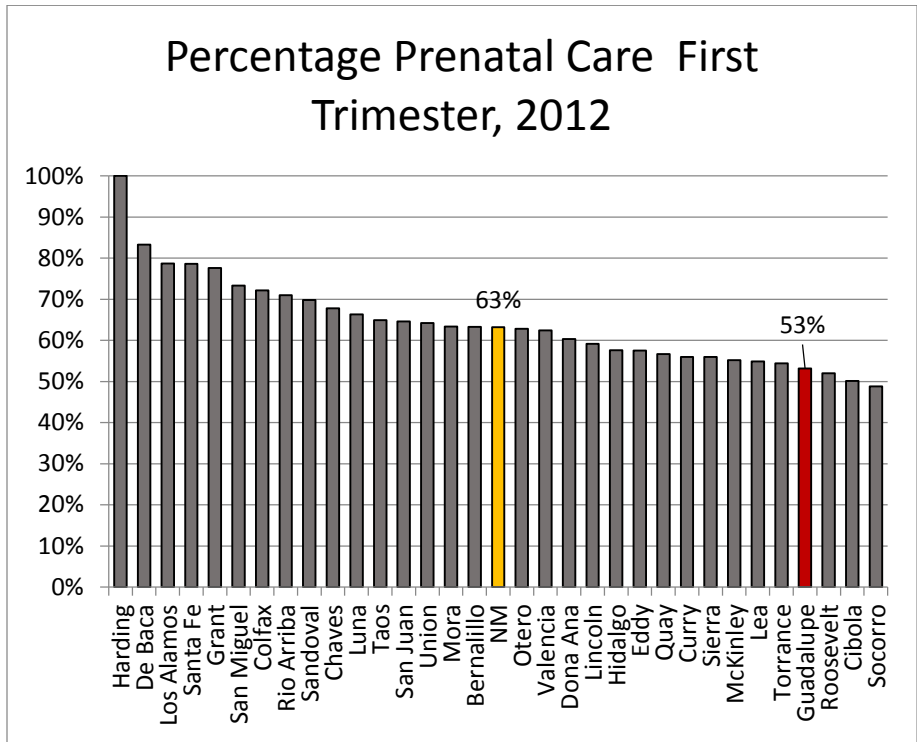


Infant Mortality Trend 2008-12

	Total	2008	2009	2010	2011	2012
Guadalupe Infant Deaths	0	0	0	0	0	0
Guadalupe Live Births	219	52	36	46	38	47
Guadalupe Death Rate						
NM	Total	2008	2009	2010	2011	2012
NM Infant Deaths	782	153	145	155	143	186
NM Live Births	141060	30154	28872	27793	27251	26990
NM Death Rate	5.5	5.1	5	5.6	5.2	6.9

In Guadalupe County, 2008-2012, there were no infant deaths for 219 births. Infant mortality, often cited as a general indicator of well-being of a population, has increased in NM since 2010 after decreasing slightly from 2008-2009.

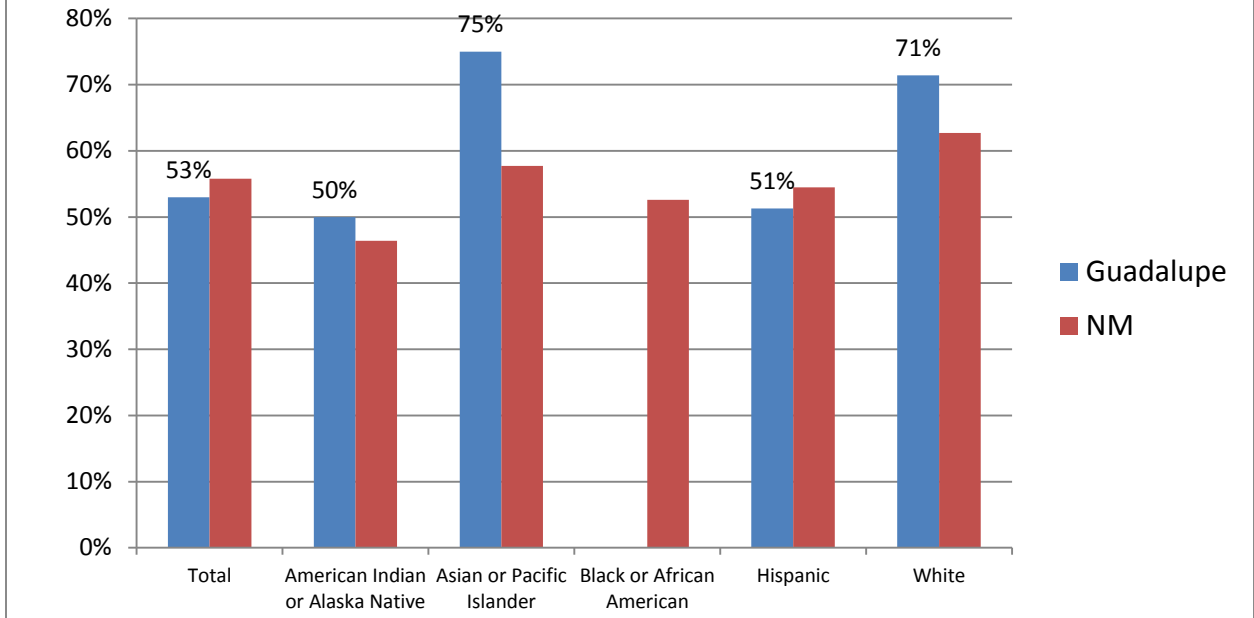
Prenatal Care



Prenatal care in the first three months helps catch problems early and affords opportunity for education of mothers. It also indicates access to health care services since prenatal care is available through Medicaid.

In the above chart, Harding and De Baca Counties had 5 and 12 births respectively, so their percentages may not be stable.

Percentage of Mothers with Adequate Prenatal Care, 2005-2012

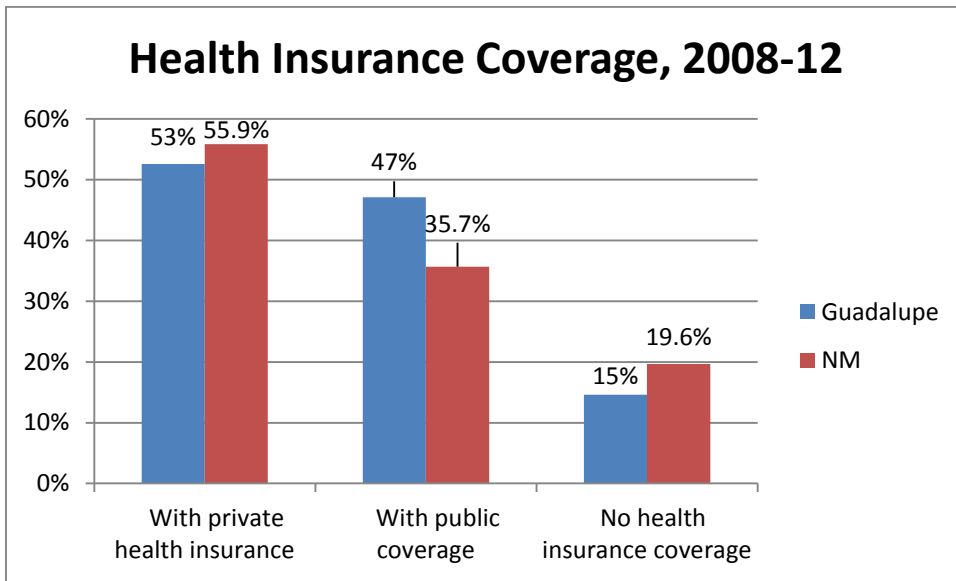


In this chart higher is better.

Doctors recommend that mothers-to-be see their health care provider before the 13th week of pregnancy and to go back for at least 13 visits before birth. The Kotelchuck Index combines when prenatal care began and the number of visits. Adequate indicates the mother received at least 80% of the indicated number of visits for when her prenatal care began.

Access to SNAP and Health Insurance

Households Receiving SNAP/Food Stamp Benefit			
Guadalupe County		NM	
Number	Percent	Number	Percent
207	15.1%	97,304	12.7%



Source: American Community Survey, 2008-12, Table DP03





Health Resources

Health Resources, 2011

	Guadalupe County	NM
Population 2011	4619	
Primary Care Physicians	3	1535
PCP per 100,000 people	64.9	73.7
Pediatricians	0	291
Pediatricians per 100,000 people under age 20		50.3
Obstetrician/Gynecologists	0	181
OB/GYN per 100,000 women		17.2
Psychiatrists	0	197
Psychiatrists per 100,000 people	3.9	9.5
Dentists	0	974
Dentists per 100,000 people		47.3
Short Term General Hospitals	1	41
STGH Beds	10	4,130
Federally Qualified Health Centers	1	100
Community Health Centers	1	152
School Based Health Centers	1	74
Medicare Beneficiaries	943	326,559
Percent of Population	20	15.7
Medicaid Beneficiaries	1356	561,762
fPercent of population	29.4	27

Area Health Resource File, HRSA.
<http://arf.hrsa.gov/arfdashboard/HRCT.aspx>

New Mexico Ranks 50th in Child Well-Being
2013 NM KIDS COUNT Profile
Guadalupe County

 <p>ECONOMIC WELL-BEING</p>	<p>Children in Poverty 2010</p> <p>50%</p> <p>NM Rate: 27%</p>	<p>Families in which Parents Lack Secure Employment 2010</p> <p>57%</p> <p>NM Rate: 39%</p>	<p>Families with a High Housing Cost Burden 2010</p> <p>Rent: 42% Own: 28%</p> <p>NM Rate: Rent: 43% Own: 25%</p>	<p>Teens (16-19) Not in School and Not Working 2010</p> <p>25%</p> <p>NM Rate: 10%</p>
 <p>EDUCATION</p>	<p>Children Attending Preschool 2010</p> <p>44%</p> <p>NM Rate: 40%</p>	<p>Fourth Graders Proficient in Reading 2013</p> <p><i>Santa Rosa: 40%</i> <i>Vaughn: NA</i></p> <p>NM Rate: 46%</p>	<p>Eighth Graders Proficient in Math 2013</p> <p><i>Santa Rosa: 47%</i> <i>Vaughn: 14%</i></p> <p>NM Rate: 42%</p>	<p>High School Students Graduating on Time 2013</p> <p><i>Santa Rosa: 80%</i> <i>Vaughn: 93%</i></p> <p>NM Rate: 70%</p>
 <p>HEALTH</p>	<p>Low Birth Weight Babies 2012</p> <p>8.5%</p> <p>NM Rate: 7.6%</p>	<p>Children without Health Insurance 2011</p> <p>8%</p> <p>NM Rate: 10%</p>	<p>Child and Teen Deaths per 100,000 2012</p> <p>Child (1-14): 0 Teen (15-19): 351</p> <p>NM Rate: Child: 19 Teen: 69</p>	<p>Teens who Binge Drink 2011</p> <p>23%</p> <p>NM Rate: 24%</p>
 <p>FAMILY AND COMMUNITY</p>	<p>Children in Single Parent Families 2011</p> <p>46%</p> <p>NM Rate: 36%</p>	<p>Families where Household Head Lacks a High School Diploma 2011</p> <p>22%</p> <p>NM Rate: 16%</p>	<p>Children Living in High Poverty Areas 2011</p> <p>100%</p> <p>NM Rate: 21%</p>	<p>Teen Births per 1,000 2012</p> <p>74</p> <p>NM Rate: 45</p>

Sources:

Children in Poverty: American Community Survey, 2006-2010, Table B17006.

Children whose Parents Lack Secure Employment: American Community Survey, 2006-2010, Table B17016.

Families with a High Housing (Rent) Cost Burden: American Community Survey, 2006-2010, Table B25070.

Families with a High Housing (Ownership) Cost Burden: American Community Survey, 2006-2010, Table B25091.

Teens Not in School and Not Working: American Community Survey, 2007-2011, Table 14005.

Children ages 3 to 4 Attending Preschool: American Community Survey, 2006-2010, Table B14003.

Fourth Graders Proficient in Reading and 8th Graders Proficient in Math: NM Public Education Department. Retrieved from: <http://www.ped.state.nm.us/Assessment/Accountability/AcademicGrowth/NMSBA.html>.

High School Students Graduating on Time: NM Public Education Department, 2013 4-Year Cohort Graduation Rates at: <http://ped.state.nm.us/Graduation/index.html>

Low Birth-Weight Babies: NM Department of Health, IBIS Database, Query Results for Percentage of Low Birth Weight Infants at: <https://ibis.health.state.nm.us/query/result/birth/BirthWtCnty/BirthWtLow.html>

Children without Health Insurance: U.S. Census, Small Area Health Insurance Estimates (SAHIE), 2011.

Child Death Rate per 100,000: NM Department of Health, IBIS Database, Query Results for Crude Rates, Ages 1-14, deaths per 100,000 Measure at: <https://ibis.health.state.nm.us/query/result/mort/MortCntyICD10/CrudeRate.html>

Teen Death Rate per 100,000: NM Department of Health, IBIS Database, Query Results for Crude Rates, Ages 15-19, deaths per 100,000 Measure at: <https://ibis.health.state.nm.us/query/result/mort/MortCntyICD10/CrudeRate.html>

Teens Who Binge Drink: NM Youth Risk and Resiliency Survey, 2011, NM Department of Health and NM Public Education Department at: https://ibis.health.state.nm.us/indicator/view_numbers/BingeDrinkYouth.Cnty.html.

Children in Single Parent Families: American Community Survey, 2006-2010, Table B09002.

Families where Household Head Lacks a High School Diploma: American Community Survey, 2007-2011, Table B17018.

Children Living in High Poverty Areas: 2011 data from the American Community Survey prepared by Population Reference Bureau for NM KIDS COUNT.

Teen (ages 15-19) Births per 1,000: NM Department of Health, IBIS Database, Query Criteria for the Adolescent Births, Girls Age 15-19 Measure (per 1,000) at:

https://ibis.health.state.nm.us/query/result/birth/AdolBirthCnty/AdolBirth15_19.html